

# Transforming the Instructional Landscape

*February 19 TIL Advisory Committee*

An Update

# AGENDA

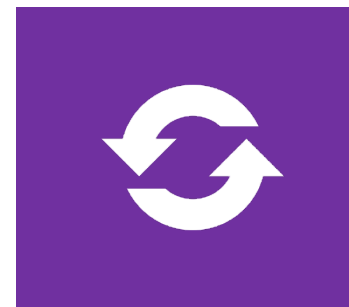
TIL by numbers

Timeline Update

Consultation

Classroom Design Process

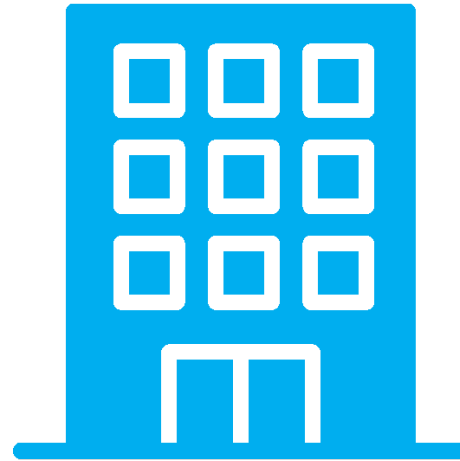
Summer Renovations



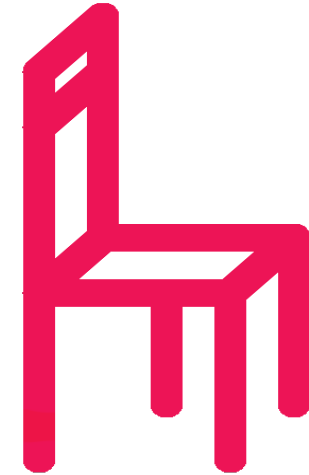
# PROGRESS TO DATE



87 CLASSROOMS



21 BUILDINGS



5,138 SEATS

# TIMELINE



Student input through iHub collaboration



**COMPLETED TO DATE**  
**87 CLASSROOMS**



**PHASE 6/7/8**  
**58 CLASSROOMS**



**PHASE 12**  
**10 CLASSROOMS**



TIL initiative launches



Partnership with Facilities & Services and CTSI



TIL Advisory Group



**PHASE 9/10/11**  
**39 CLASSROOMS**

# DESIGN IN PARTNERSHIP

## 2020 Summer Renovation Community Consultations



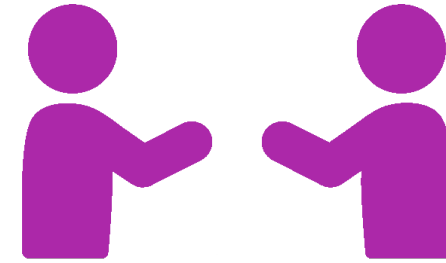
556 EMAILS

- Individualized emails sent to professors who have taught in upcoming rooms.
- *SurveyMonkey* surveys sent to allow for easy general participation.



6 DIVISIONS

- Specific faculty engagement:
  - University College
  - Medicine
  - OISE
  - New College
  - Chemistry
  - Engineering

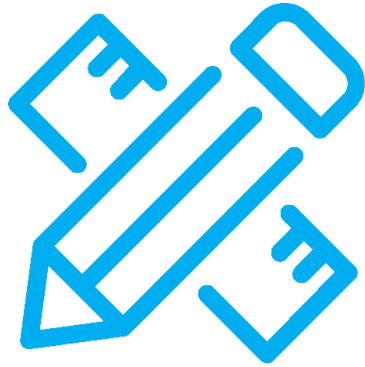


34 INTERVIEWS

- One on one interviews with Students, Faculty, and Staff.
- Solo interviews allow for more in depth understanding of individual needs.

# DESIGN IN PARTNERSHIP

*Current Community Consultations*



REFINING THE CLASSROOM  
DESIGN PROCESS

WHAT DOES  
COLLABORATION LOOK  
LIKE?

# DESIGN IN PARTNERSHIP

## *Classroom Co-Creation Through Dialogue*



**EXPLORE**



**IMAGINE**



**PLAY**

*Accessibility Comes First*



*Instructors as Partners*



*The Right Room for the Right Course*

*Purpose-Driven Design*

*Movability Supports Learning*

*Individuals, Not Averages*



*Consistency Builds Trust*



*Accessible Classroom Information*

*Seamless Designs Empower*

*Emotional Stakes Matter*



# EVENT VISION



**When:** February 19<sup>th</sup>, 2020 - 5:30pm – 7:00pm

**Where:** Myhal 380

**Facilitators:** the Transforming the Instructional Landscape Team



**EXPLORE**

*Through group discussions, participants will share their best learning/teaching experiences through storytelling and discussing themes that emerge from these conversations.*

POSTPONED



**IMAGINE**

*A post-it note brain storming session will help creatively imagine practical and concrete examples of how the design principles might 'come to life' for the Faculty of Medicine.*



**PLAY**

*Groups will then take part in designing an 'ideal classroom space' for the Faculty of Medicine using magnetic classroom components.*



# INSIGHTS & DATA



**Short Term:** an opportunity for community engagement and initial feedback



**Long Term:** meaningful data that could provide insights on future projects

# 2020 Summer (Phase 7) Renovation Overview

<b>BAHEN</b> .....	<b>4 Lecture Theatres</b>
<b>EARTH SCIENCES</b> .....	<b>1 Lecture Theatres</b>
<b>GALBRAITH</b> .....	<b>6 Classroom HVAC Upgrade</b>
<b>LASH MILLER</b> .....	<b>1 Lecture Theatre, 2 Classrooms, 1 Collaborative</b>
<b>McLENNAN PHYSIC LAB</b> .....	<b>2 Lecture Theatres</b>
<b>OISE</b> .....	<b>1 Collaborative, 2 TEAL</b>
<b>SANDFORD FLEMING</b> .....	<b>1 Classroom</b>
<b>SIDNEY SMITH</b> .....	<b>3 Classrooms</b>
<b>UNIVERSITY COLLEGE</b> .....	<b>11 Seminars, 8 Classrooms, 1 TEAL</b>
<b>WETMORE HALL</b> .....	<b>4 Collaborative</b>