

SAMPLE ROOMS DRAWN TO MAXIMUM+ CAPACITY

figures below represent averages from rooms across the campus, and should be considered as absolute minimum space requirements.

All rooms should meet design requirements for distance to screen, distance to furthest seat, vision cone, circulation and accessible seating.

Exam Style

2.2 m² / station OR 0.45 students per m²
 23.7 sq. ft / st. 0.04 per ft²

Workshop style

1.9 m² / station OR 0.5 students per m²
 20 sq.ft / st. .05 per ft²

Seminar style

1.7 m² / station OR 0.6 students per m²
 18 sq. ft / st. .06 per ft²

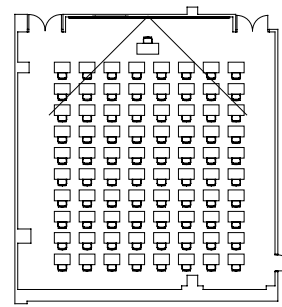
Lecture style

1.4 m² / station OR 0.7 students per m²
 15 sq. ft / st. 0.07 per ft²

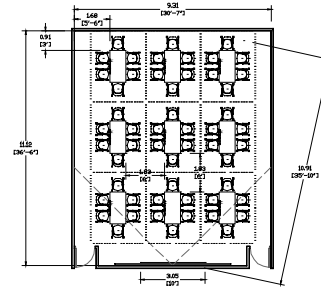
Tablet style

1.2 m² / station OR 0.8 students per m²
 13 sq. ft / st. .08 per ft²

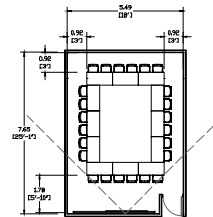
space factor = m²/station 1 m² = 10.76 ft²



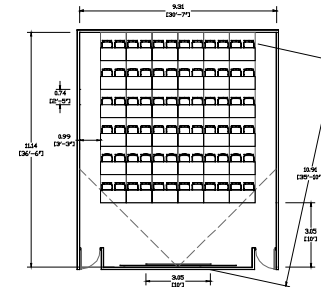
Sample room
 Loose tables
 individual/
 exam style
 80 capacity



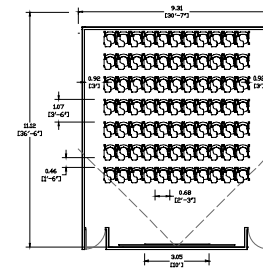
Sample room
 Loose tables
 workshop style
 24 capacity
 42 nasm
 1.75 space factor
 - inadequate
 room @ front



Sample room
 Loose tables
 seminar style
 24 capacity
 42 nasm
 1.75 space factor
 - inadequate
 circulation space



Sample room
 Loose tables
 lecture style
 72 capacity
 103 nasm
 1.4 space factor
 10' wide screen
 18' blackboards



Sample room
 Loose tablet arm
 lecture style
 77 capacity
 90 nasm
 1.3 space factor
 10' wide screen
 18' blackboards